

Instructions for the FLOW BUSTER

Be sure to power down your control box before doing any wiring. Using this device assumes the installer has basic electronic wiring skills.

This device takes relay or switch controls from either an extended panel or from another control system to operate the 4 different user adjustable remote speeds in a Pentair VS pool pump.

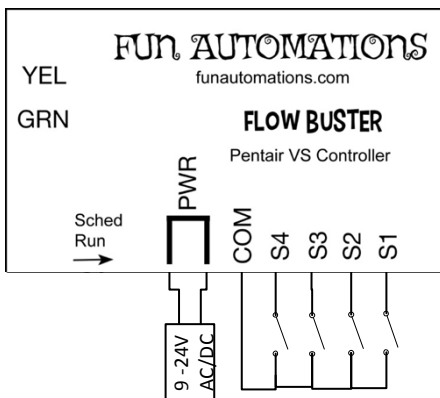
Pentair pumps come with a remote control data cable included. Only 2 of the wires are actually used in this cable, the yellow and the green. These wires will get connected to the YEL(yellow) and GRN(green) terminals of the Flow Buster.

Closure of a contact will run the speed selected. If multiple contacts are closed the highest speed will take priority. It will also delay 5-7 seconds once you release a contact before the pumps stops. That way you can change speeds during the 5 seconds without the pump doing a off – on cycle.

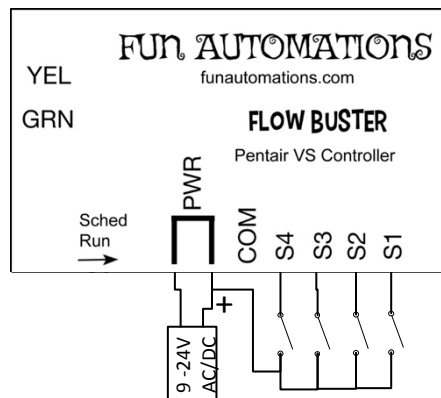
The “Scheduled Run” switch can be selected by sliding the small switch inside in the direction of the arrow.

This feature is to tell the unit if you would like to put the pump back into a state to use its own internal schedule as normal after you have turned off the pump through the Flow Buster. If this switch is left in the direction opposite the arrow, when the Flow Buster has released control, the pump will be left in a state of shutdown and will only run again if manually controlled by the pump panel, or the Flow Buster again itself, and will not run any preprogrammed schedules unless you manually press the RUN/STOP button on the pump panel.

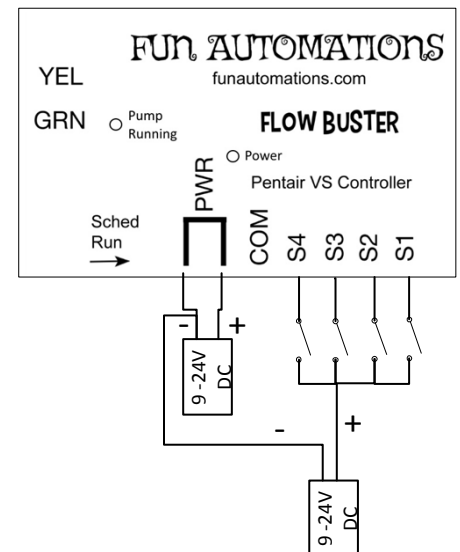
The inputs can be connected any of 3 ways



By connecting the relays/
switches between the COM



Or by connecting the relays/
switches to the power supply.
Positive side if using DC, Either
side if AC. If The Negative side of
the DC is connected the unit
won't be damaged, it just will
not operate when the contacts
are closed.



Or also by using a second power
supply, ONLY IF USING DC, by
connecting the negatives
together and the positive to the
switches/relays.

You can connect to the aux. relays of existing control panels just as if you are connecting to the input coil of a relay. You need to be sure to connect the black wire side (or left side) to the COM, and the red side (or right side) to the speed input S1-S4 on each output. All must be identical. Crossing some to left and some to right and connecting to COM will short, and possibly damage unit or control panel.